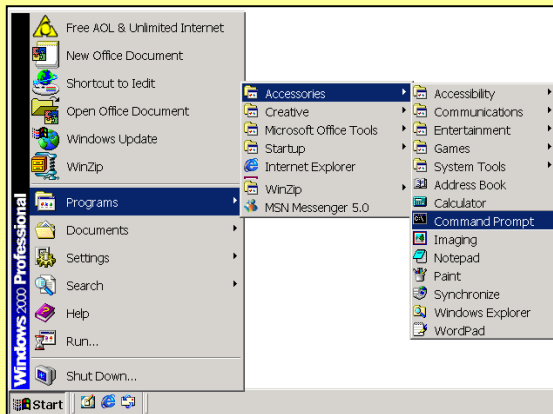


1 Check IP address

- The AP's default IP address is 192.168.0.1
- The AP's IP address must be:
 - ⇒ In the same IP subnet as your computer. For example, if your computer's IP address is 192.168.0.5, your AP's IP address must be 192.168.0.X ("X" is any number between 1 and 254, but different from your computer's IP).
 - ⇒ Not used by other computer or network device
- If the AP's IP address is okay. Please go to section 3 "utility installation" directly. If you are not sure, please follow the steps below to check your computer's IP address:

For WinXP/2000/NT/ME/98SE

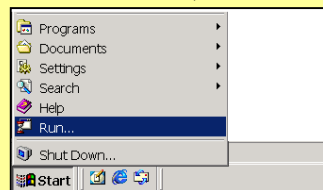
- From the Start menu, open Start->Program->Accessories->Command Prompt



- Type "ipconfig" to view the ip address

For Win95 / Win98

- From the start menu, choose Start-> RUN

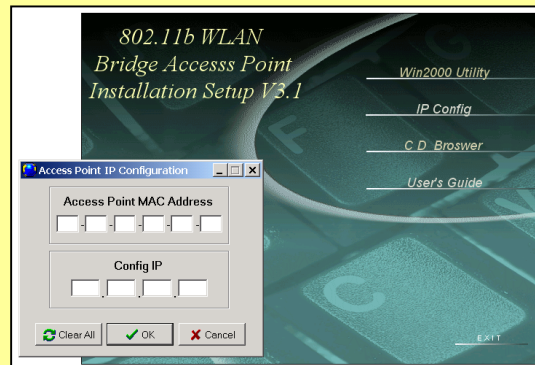


- Type "winipcfg" to view the computer's IP address

2 Change the AP's IP address

If your AP's IP address is not in the same subnet as your computer or if the AP's default address is already used by some other device. Please follow the instruction below to change your AP's IP address

- Insert the installation CD into the CD-ROM drive
- The auto run program should start, if not, double click on the CD-ROM drive from "my computer" to start.
- Click on "Ipconfig", the following screen should appear



- Please enter the 12 digit MAC address printed on the bottom sticker of the AP (starting with 0002...)
- For "Config IP", please enter an address that is not used by any computer or device. **It must be in the same IP subnet as your computer** (share the same first 3 numbers of the IP address)..

*Note: If you are not sure whether an IP address is used by other computer or device. Please open the command prompt and type "ping <ip address>". If shown "request time out", the IP address is **not** used by other device.*

- Press "okay" to make change. The computer will try to ping the AP's new address. However, it can take up to 20 seconds for the change to take effect. Therefore, **please disregard the ping failure message.** Wait up to 20 seconds before attempting to access the AP.

Note: This procedure works only during the first 30 seconds after power up. If the IP change has failed, please disconnect and reconnect the AP's power to do a power reset, then press "okay" to change IP again..

3 SNMP Utility Installation

- Insert the installation CD into the CD-ROM drive.
- The auto run program should start, if not, double click on the CD-ROM drive from "my computer" to start
- Click on Win_ Utility (the utility will auto detect what is the Windows version) to begin installation.
- The utility will ask you to reboot the computer
- After reboot, you can start the utility from "Start -> Program -> Wireless LAN Utility -> AP Configuration"
 - ◇ Choose "File -> Find Access Point" to search for available AP.
 - Note: Although this utility will find AP in different subnets, it can only configure AP in the same subnet as the computer**
 - ◇ Double click on AP to configure
 - ◇ When prompt for "community" and "authority". Enter "public" for Community, and choose "administrator" for Authority.
 - Note: If "public" does not work, please try "JAHSXL" (in all capital letters) for Community.**
 - ◇ After making changes (except for WEP which takes effect immediately), please select "File->Download Changes" to save the settings.
- Please refer to the complete manual for detail description on how to set each function

4 Trouble Shooting

Q. I can't make any change to the AP using the SNMP utility, or the default password doesn't work.

A. Please use "JAHSXL" for Community and choose "administrator" for authority to get into the AP.

Q. The SNMP utility can not find the AP

A. Please make sure your computer's IP address is in the same subnet as the AP. Power off and on, then try again. If still fail, please refer to section 2 "Change the AP's IP address" to change AP's IP address.

Q. I can't change the AP's IP address using the IP Config utility.

A. Please make sure the AP's DHCP client is off. The utility works only during the first 30 seconds after power on. Reset the power and try again.

Q. After setting the WEP encryption on the AP, the AP says "unable to set AP, possibly not connected"

A. This occurs when you use a wireless card to set AP's WEP encryption. The AP's WEP encryption takes effect immediately after clicking on "set" button. Because your wireless card's WEP is still not on, the PC can no longer connect to it, hence the error message. But, the AP's WEP encryption is now on. Please set the WEP key on the computer to work.