

WLA-9000AP Emergency Recovery

This document guides tell you how to inspect and repair your WLA-9000AP firmware.

Under certain conditions your WLA-9000AP firmware will crash. The most common situation is loss of power during the updating firmware process, resulting in not being able to power on.

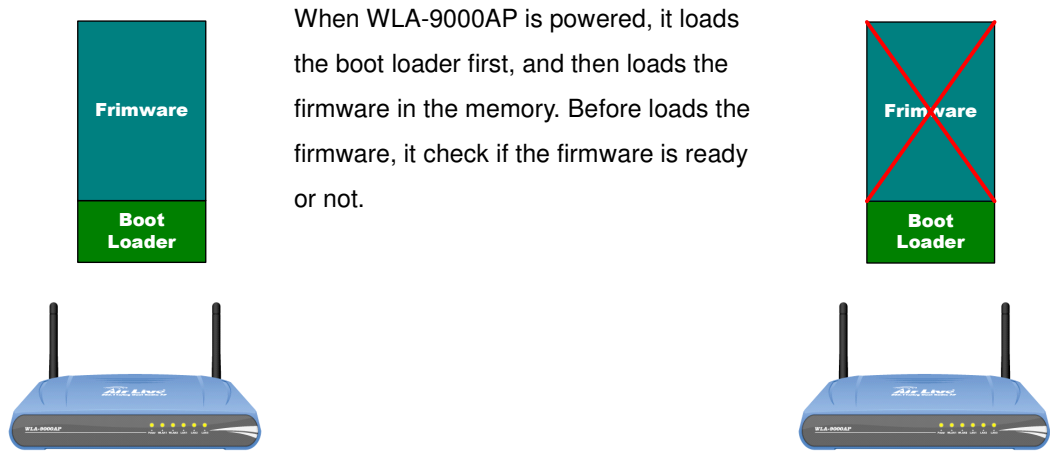
You can try the following steps to see if the firmware is damaged or not:

1. At local area, ping your WLA-9000AP IP address
2. Try using telnet to login to WLA-9000AP
3. Try login to your WLA-9000AP's Web UI

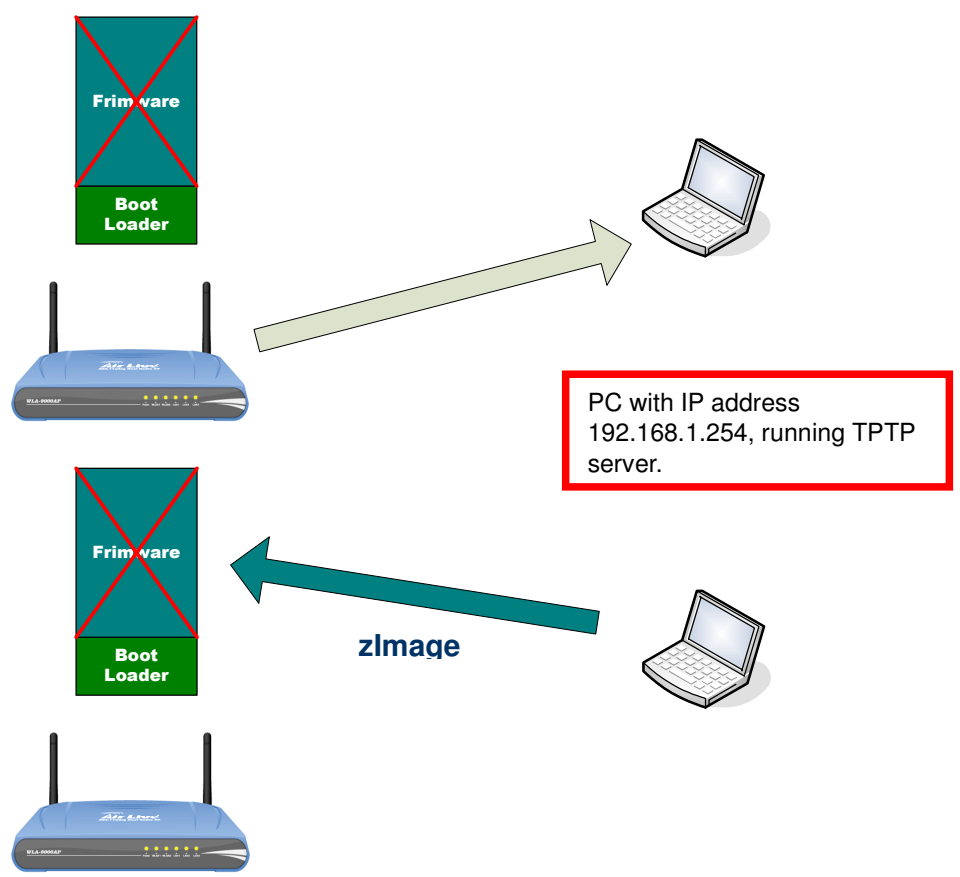
It might be possible that the IP address of the WLA-9000AP has been changed. Please manually reset your WLA-9000AP to factory default setting IP address as 192.168.1.1 and repeat the above three steps to confirm firmware.



In our design, every time when the WLA-9000AP turns on, the bootloader will automatically check if the firmware inside the memory is complete. If the firmware has no problem, the WLA-9000AP will load the firmware inside the memory. If the firmware inside the memory is damaged, then WLA-9000AP will automatically search the Internet for the computer, and update the new firmware through the computer.



If the firmware is crashed, the boot loader automatically loads its recovery program. It looks for the TFTP server in the network with fix IP address 192.168.1.254/255.255.255.0 and download the zImage (firmware) file.



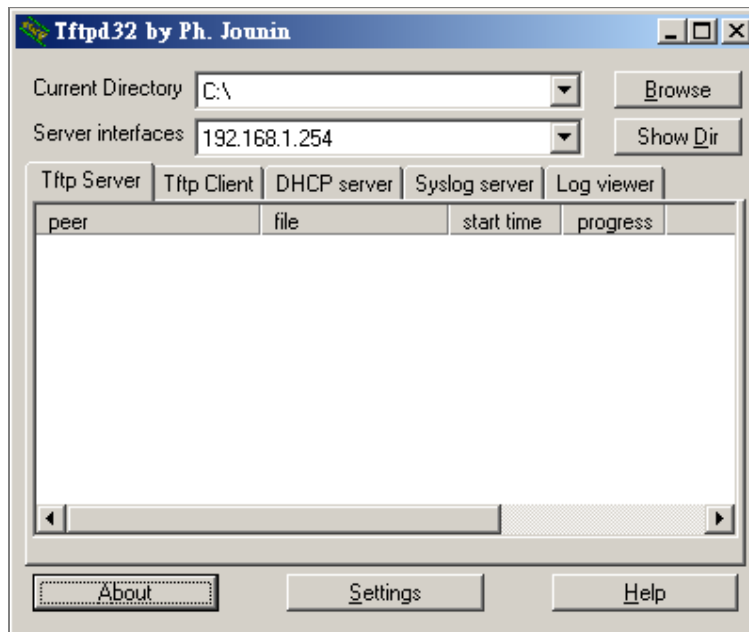
It then replaces the crashed firmware with new one (the zImage) and reboot itself.

To complete automatic updating to the firmware, we must prepare the following things.

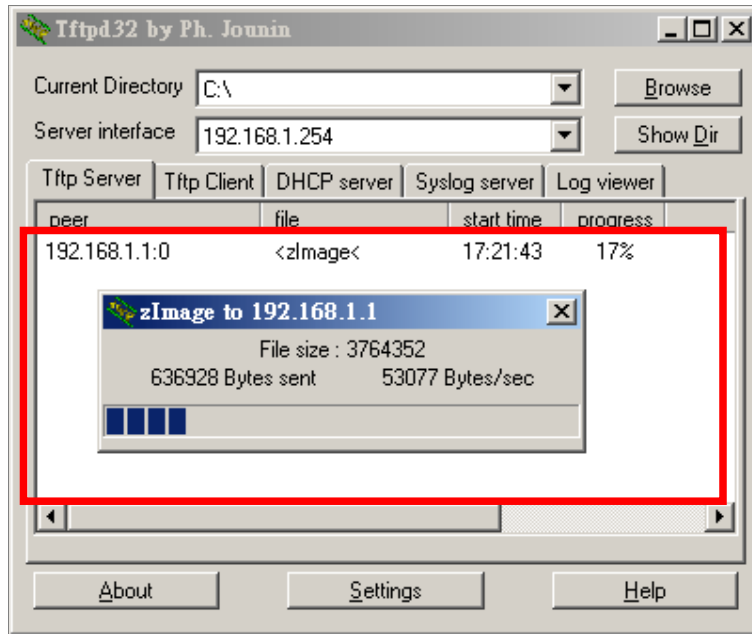
1. WLA-9000AP and other computer accessories.
2. PC or Laptop (Microsoft Windows operating system), set IP address as 192.168.1.254/255.255.255.0 (To avoid confusion, we don't recommend setting many IP addresses)
3. WLA-9000AP firmware, you can download it from here http://www.airlive.com/support/WLA-9000AP/fd_wla_9000ap.shtml, and name the file as zImage (Note: Only this file name can be used) and save it to C: drive (to avoid confusion, please don't save the firmware file to any other drive, or else it won't work)
4. TFTP command, we suggest tftpd32 http://tftpd32.jounin.net/tftpd32_download.html, please place in C: drive to execute this command.

Please follow the following steps to operate:

1. Check if the WLA-9000AP firmware is located in the C: drive.
2. Check your computer IP is set as 192.168.1.254/255.255.255.0
3. Check to see if your computer is connected with WHA-5500CPE
4. Execute the TFTP server software in your computer drive.



5. Let the WLA-9000AP connect to a power source.
6. From your TFTP command session, you can see WLA-9000AP reading the firmware in the C: drive.



7. It takes around 5 minutes to download firmware and around 5 minutes to update the firmware.
8. After a successful recovery, the WLA-9000AP boots up automatically.
9. Try ping or access 192.168.1.1 by an internet browser.
10. Repeat the processes again if failed.